



Research & Evaluation Institute

Director | Dr. Darlene Breau | November 2021



Harris County
Department of
Education

Data Sources

Stakeholder Deliverables

National Center for
Educational Statistics

Dept. of Education

EBSCO

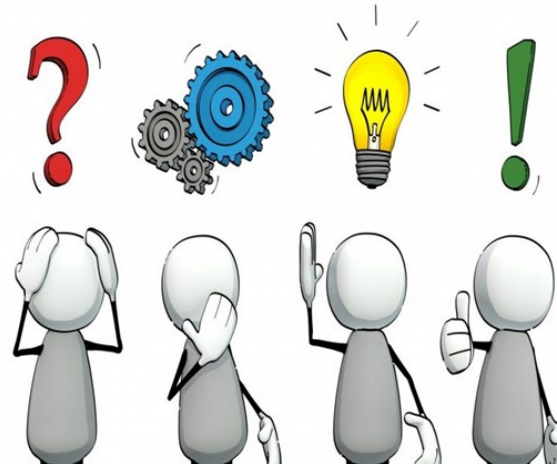
ISD's

TEA

Census

Other National
Databases

REI



Accessible
= Concise
Customized

Accountability & Research

21 divisions/programs

- Service delivery
- Client satisfaction
- Outcomes
- Financial effectiveness

Research

- Dashboards
- Partnerships
- Collaborations
- Special Projects



Special Projects



COVID-19

Status: **APPROVED**

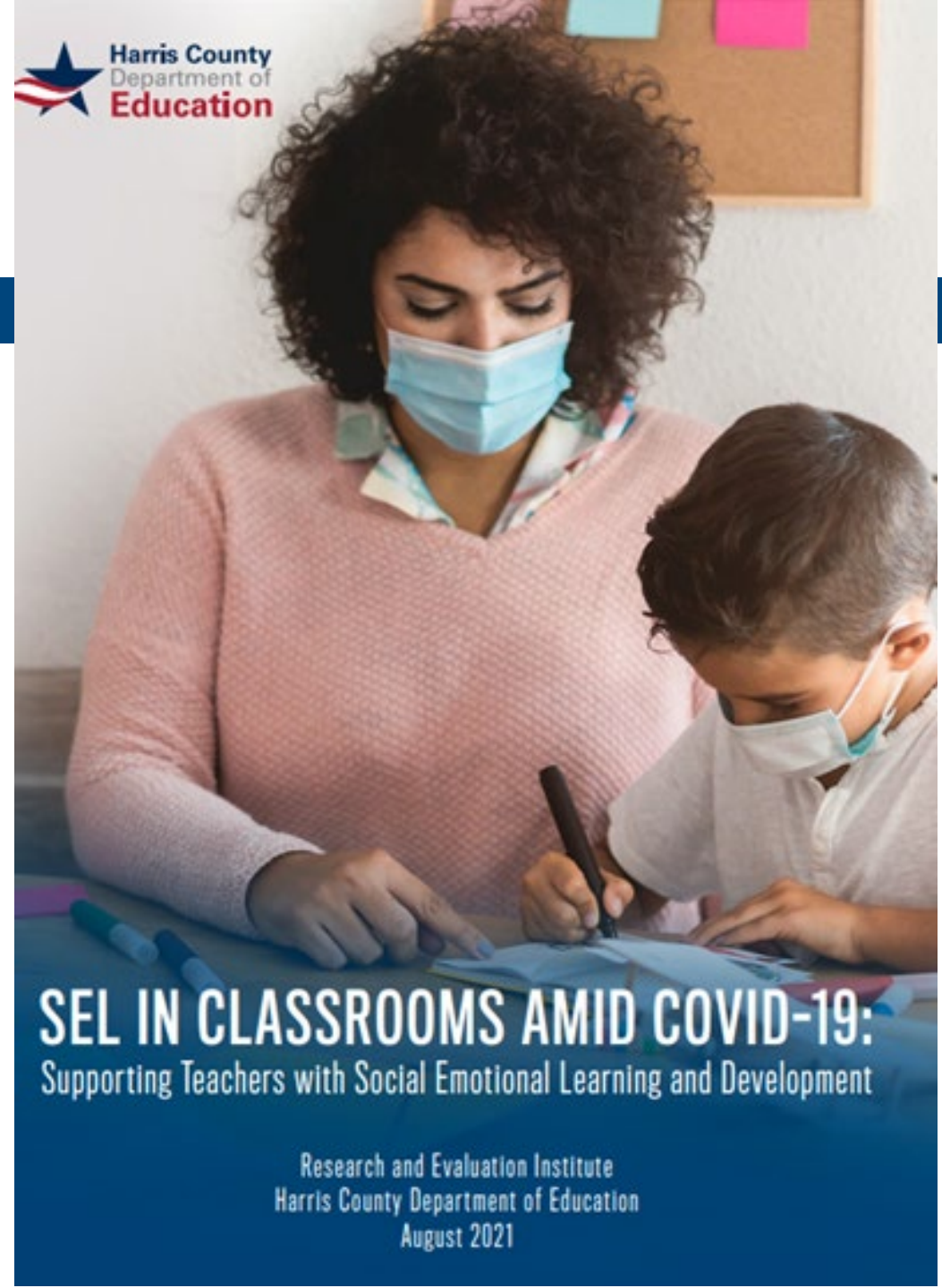
Date/Time: November 5, 2020 7:41 AM

Show this code at the front desk when your temperature is taken



Research

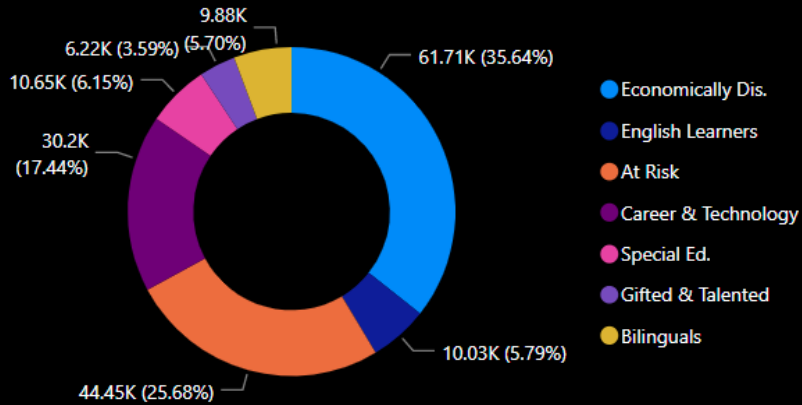
Understanding districts needs for guidance in the area of **Social and Emotional Learning**, HCDE's Research and Evaluation Institute provided a whitepaper of ***Best Practices*** as they navigate these new spaces.



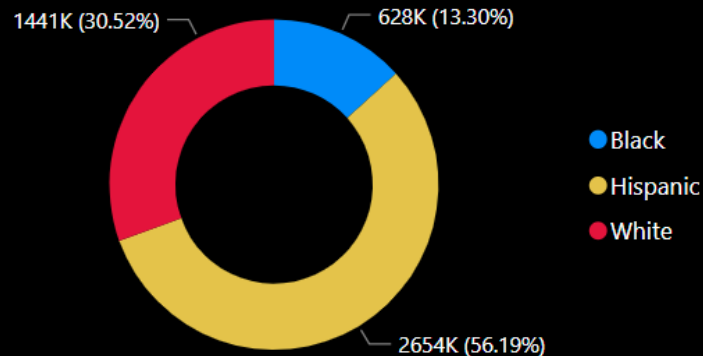
Student Enrollment



Special Populations



Ethnicity



District Name

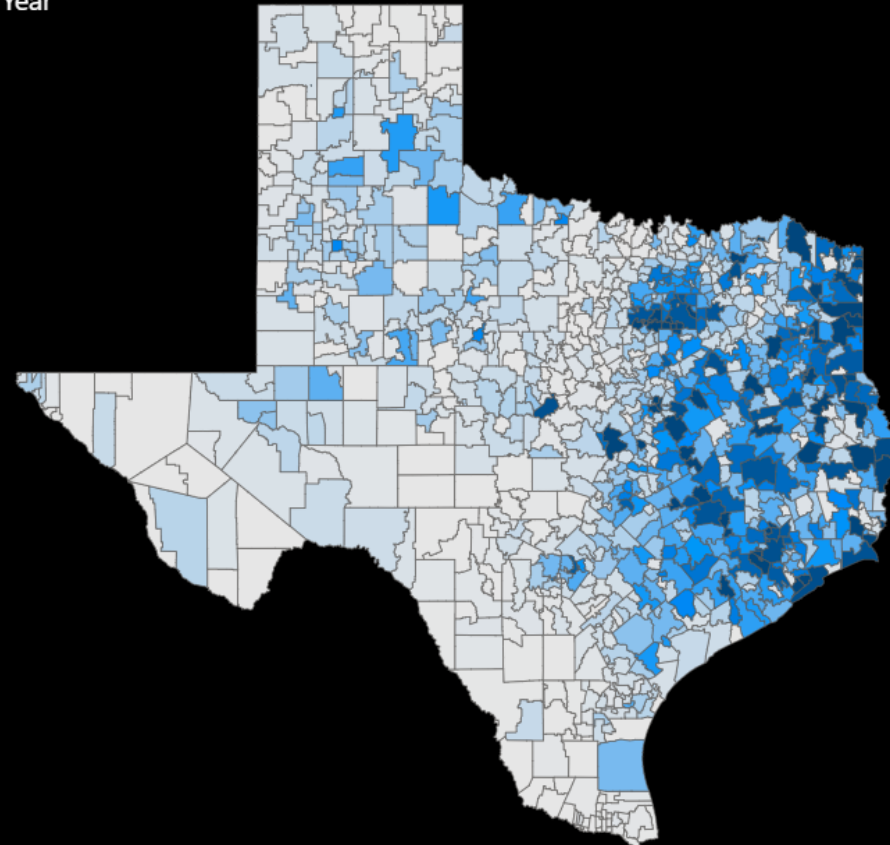
Total Student Enrollment

5M

Blue Color Shows Saturation of African American Students %



Year



2010

2011

2012

2013

2014

2015

2016

2017

2018

2019

Internal Accountability

Head Start



CASE for Kids





CLI Assessment Data Dashboard 2020-2021

Age

- 3
- 4

Language

- Bilingual
- English Only

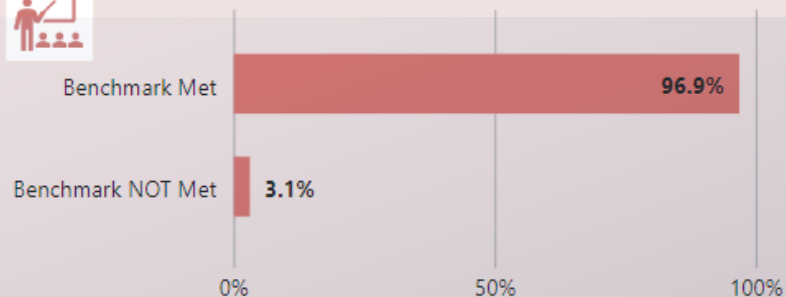
Center

- Select all
- Barrett Station Head Start
- Baytown Head Start
- Channelview Head Start
- Compton Head Start
- Coolwood Head Start

Classroom

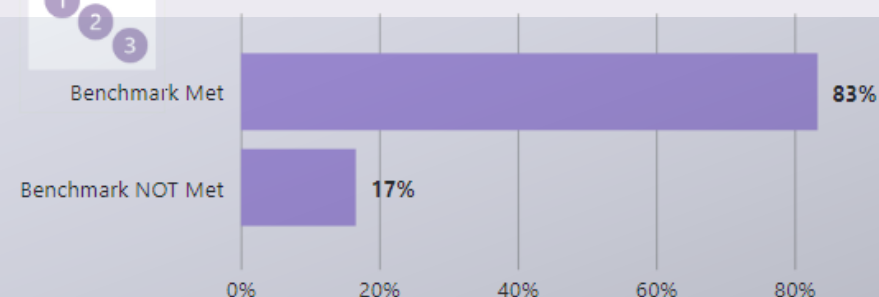
- Select all
- Armstrong's PK Class
- B Fisher's PK Class
- Barnes's PK Class
- Barnhart's PK Class

Domain I-Social Emotional Behaviors



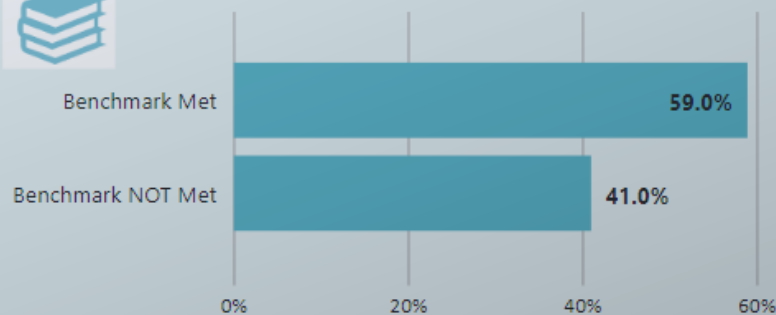
Benchmark Met	Benchmark NOT Met	Total Students
492	16	508

Domain III-Mathematics



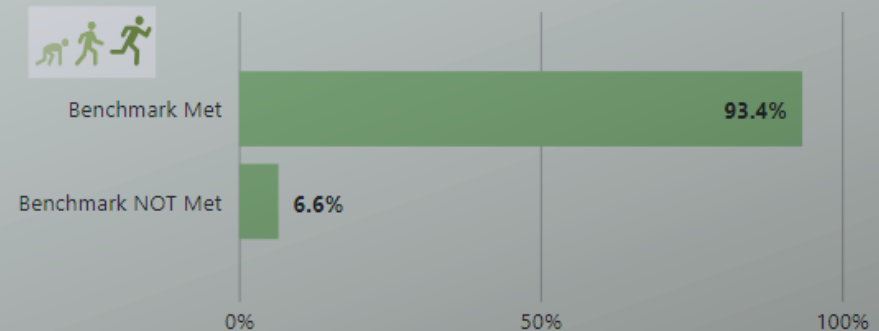
Benchmark Met	Benchmark NOT Met	Total Students
466	93	559

Domain II-Language & Literacy



Benchmark Met	Benchmark NOT Met	Total Students

Domain IV-Physical Health and Development



Benchmark Met	Benchmark NOT Met	Total Students



Head Start Community Assessment

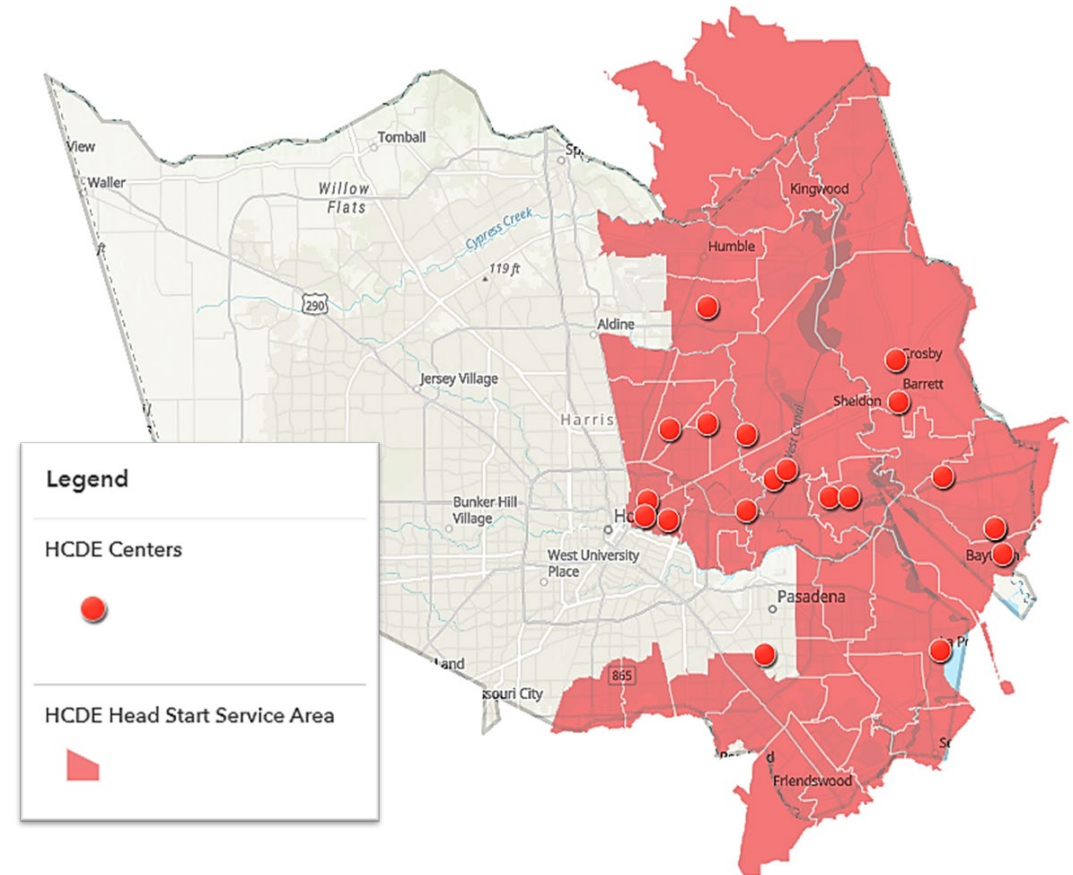


- Guide program planning, inform services, and evaluate needs as they relate to Head Start programming
- Identifies trends and conditions contributing to the need for Head Start services for young children and their families
- Multi-year planning process

State of the Grantee

Based on the 2018-2019 year, HCDE served **1,578 students** from **1,476 families**.

- The most common race for students **White** and the most common ethnicity of EHS/HS students are **Hispanic or Latino**.
- **English** is the most common language spoken at home followed by **Spanish**.



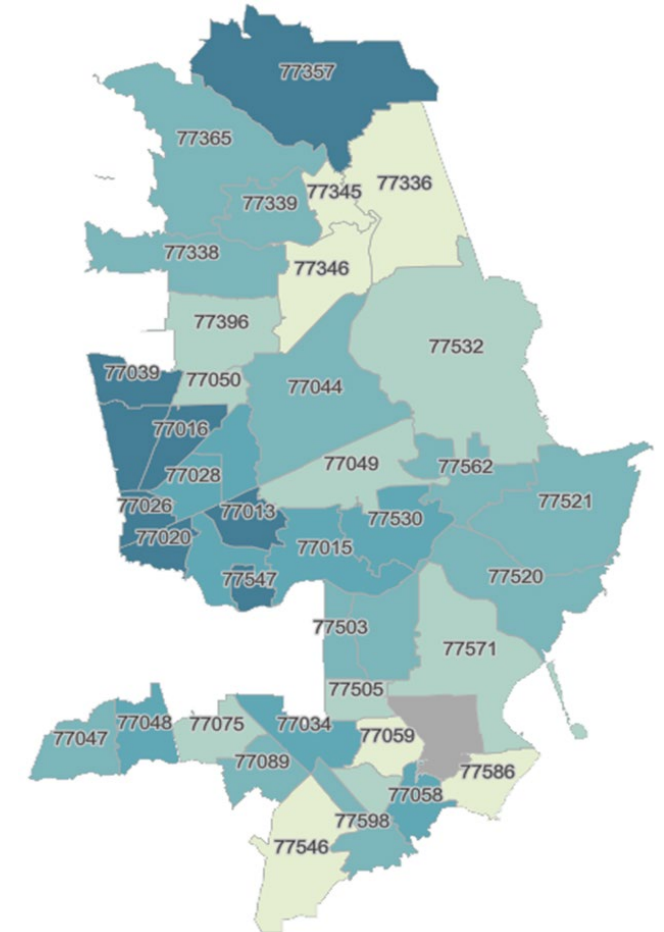
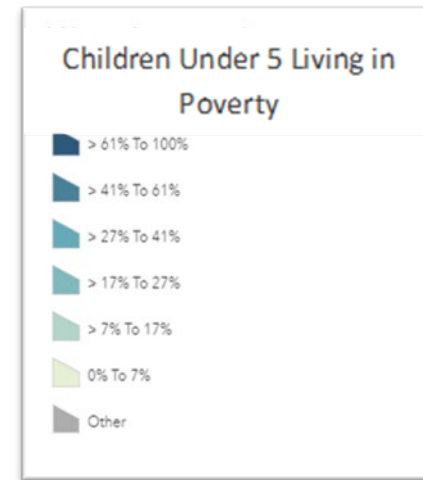
Community Characteristics

In HCDE's service **23,761 children** under 5 live below poverty

In terms of distribution, approximately **7.6% of the total population** is under 5 and **11.5% of the population below poverty** is under age 5

Children under 5 living below poverty are...

- 23.6% Black or African American
- 65.5% White (including Hispanic or Latino)
- 58.0% Hispanic or Latino



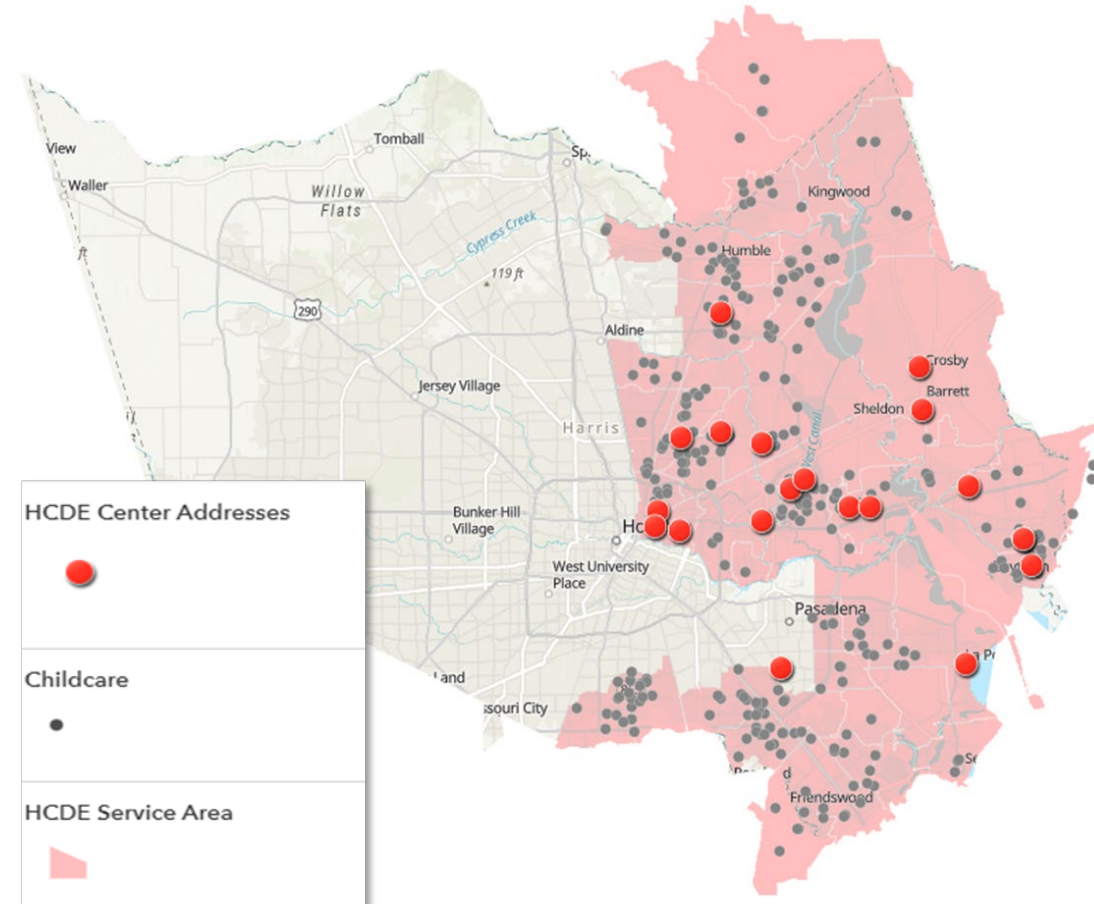
Child Development Programs

An estimated **23,761 Head Start eligible children** reside in the service area

Of these children...

- **11,069** are enrolled in a public pre-k program.
- **4,031** are enrolled in subsidized childcare
- **1,421** are enrolled in Head Start & Early Head Start

An estimated 7,240 children remained unserved.

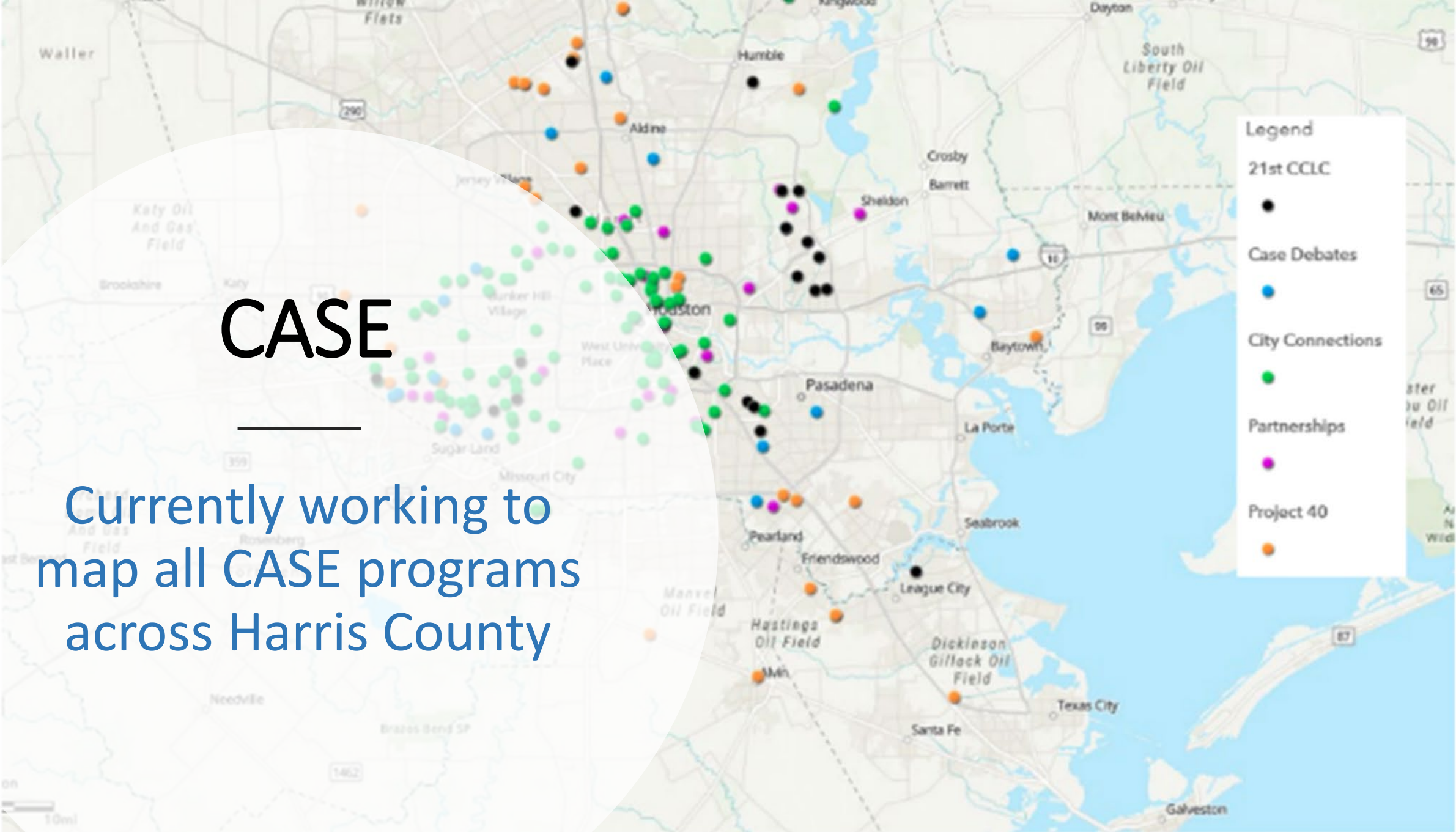


CASE

Currently working to
map all CASE programs
across Harris County

Legend

- 21st CCLC ●
- Case Debates ●
- City Connections ●
- Partnerships ●
- Project 40 ●



Client Satisfaction

HCDE employees expressed a 98% satisfaction with the services provided by REI.



98%

Challenges



Provide quality and **timely** deliverables for real-time, data-driven decision making.



Balance internal and external needs.



Develop **partnerships** that can enhance opportunities for high-impact research.



Increase our **visibility** in the educational research community.

Contact Information

Darlene Breaux, Ed.D.

Director Research and Evaluation
Institute

Email: dbreaux@hcde-texas.org

Phone: (713) 696-8291